

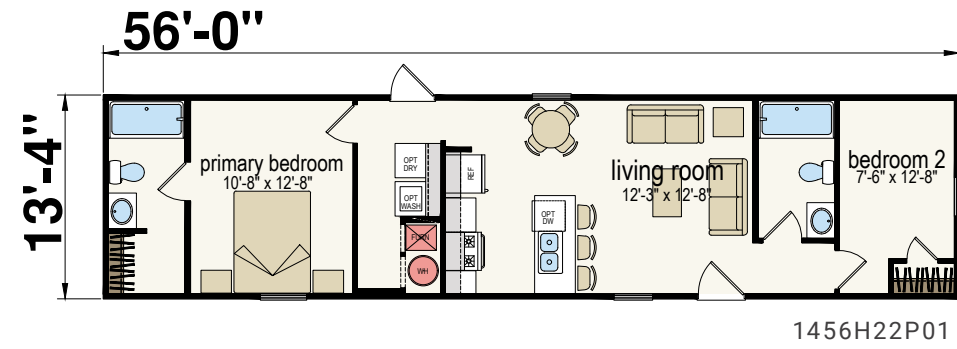


The Grand
Floor plan on pg. 31

Peak

Alternate Option Available: 1456H22P02 - Peake Reverse Aisle

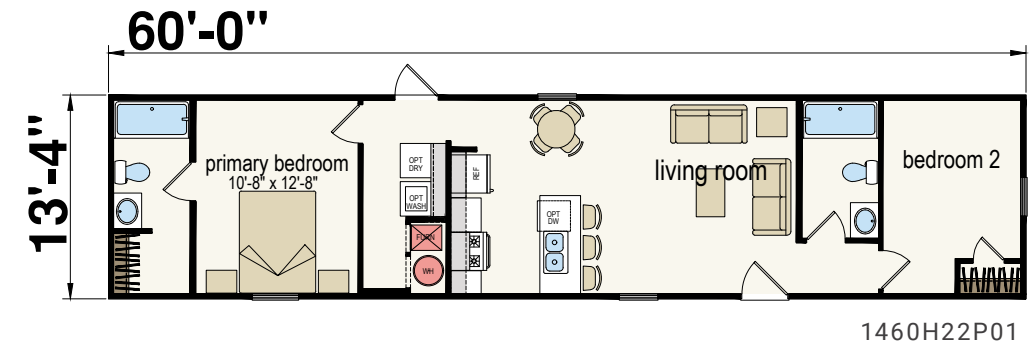
Two Bed | Two Bath | 747 Sq. Ft.



Crest

1460H22P02 - Crest Reverse Aisle

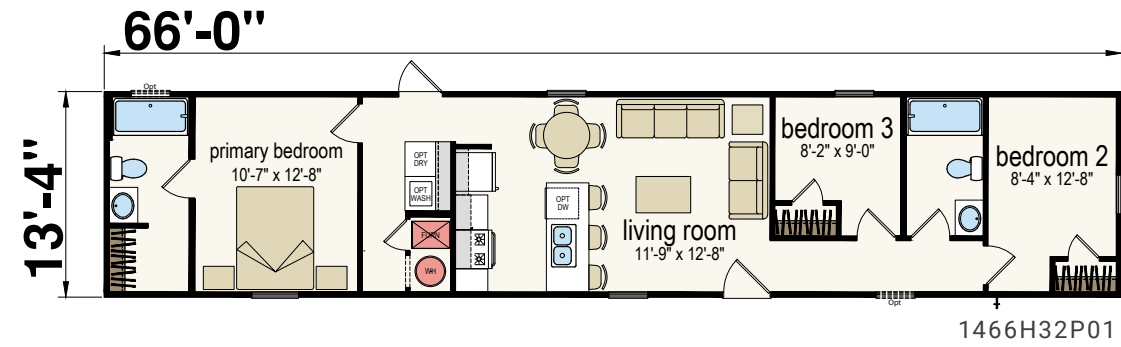
Two Bed | Two Bath | 800 Sq. Ft.



Zenith

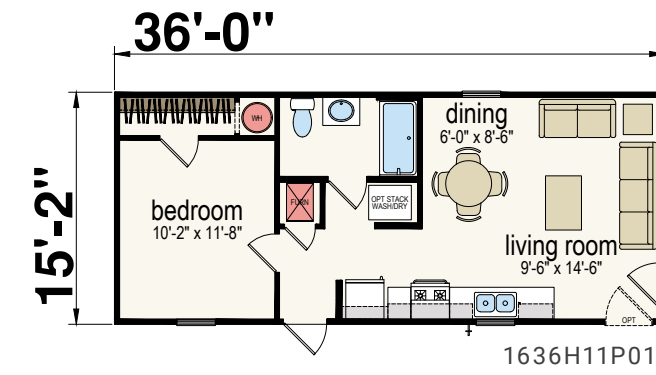
1466H32P02 - Zenith Reverse Aisle

Three Bed | Two Bath | 880 Sq. Ft.



Pike

One Bed | One Bath | 546 Sq. Ft.



Virtual Tour!

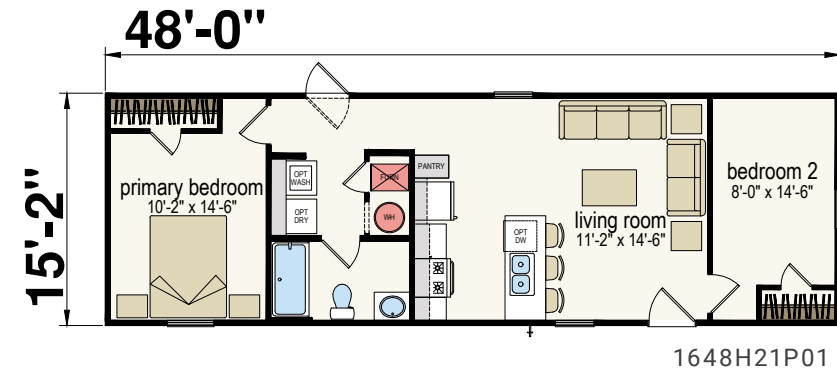


Virtual Tour!

Fulton

Rendering shows 1648H21P02 - Fulton Reverse Aisle

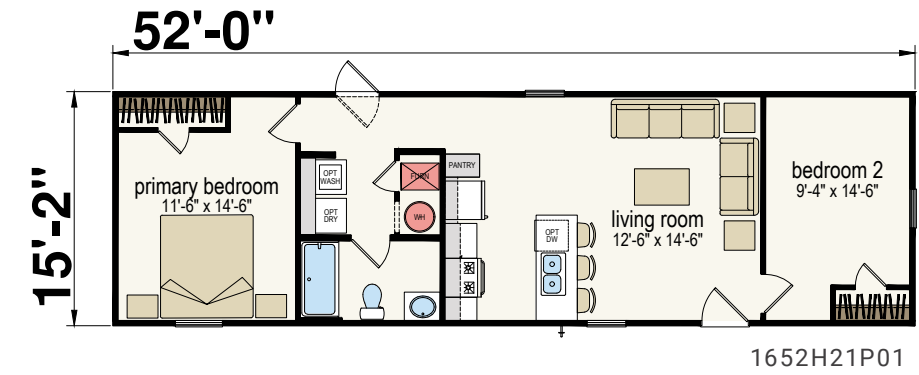
Two Bed | One Bath | 728 Sq. Ft.



Gallatin

Rendering shows 1652H21P02 - Gallatin Reverse Aisle

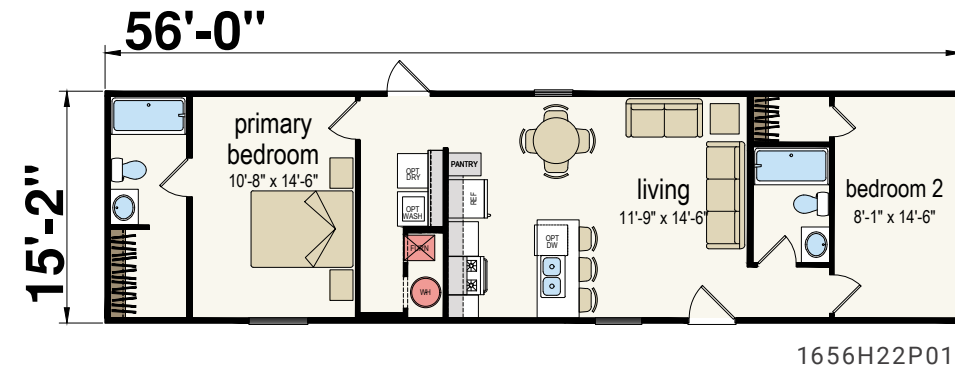
Two Bed | One Bath | 789 Sq. Ft.



Barkley

1656H22P02 - Barkley Reverse Aisle

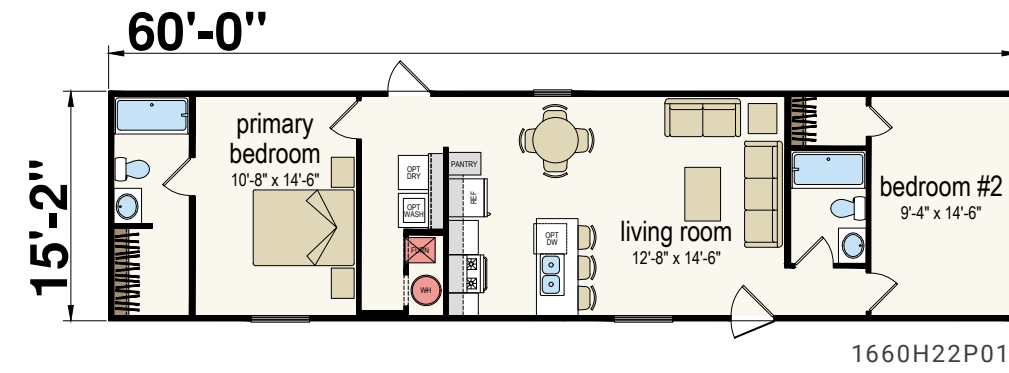
Two Bed | Two Bath | 849 Sq. Ft.



Spire

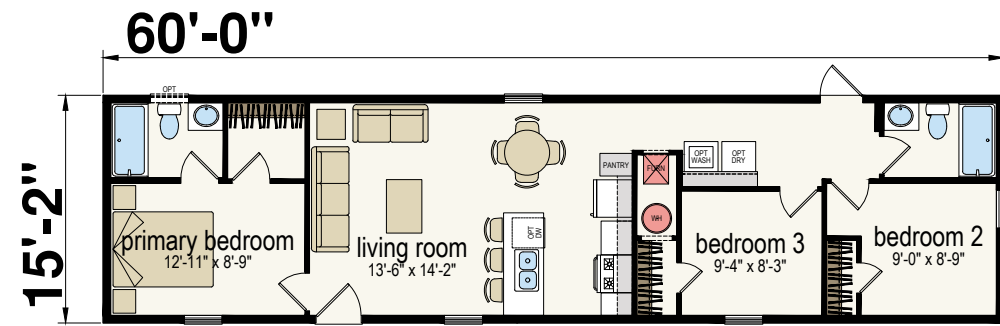
1660H22P02 - Spire Reverse Aisle

Two Bed | Two Bath | 910 Sq. Ft.



Casey

Three Bed | Two Bath | 910 Sq. Ft.

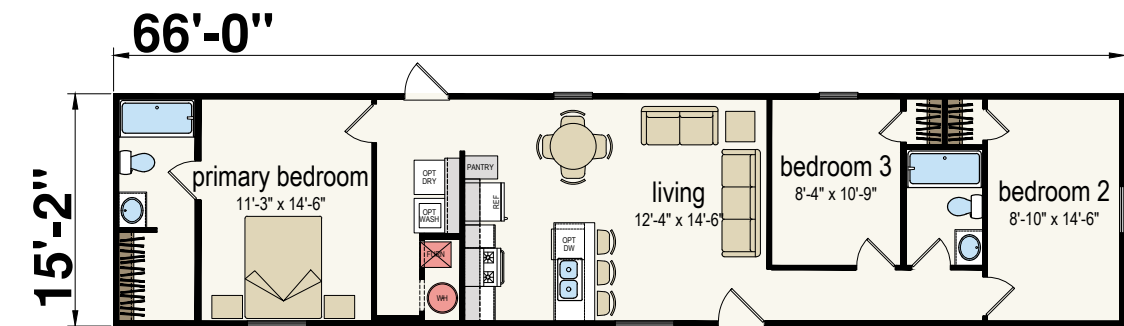


1660H32P05

Vertex

1666H32P02 - Vertex Reverse Aisle

Three Bed | Two Bath | 1,001 Sq. Ft.



1666H32P01



Virtual Tour!

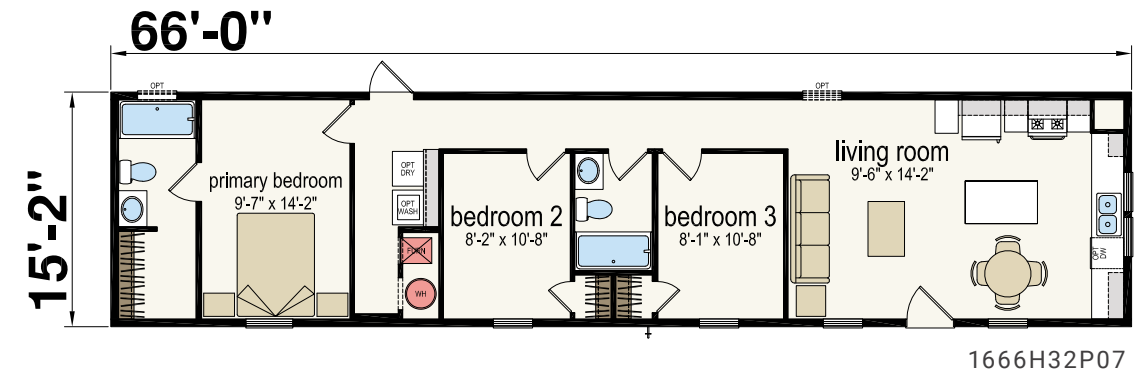
Vertex | Interior Photos



Hickman

Only End Elevation Option for this Model is P1

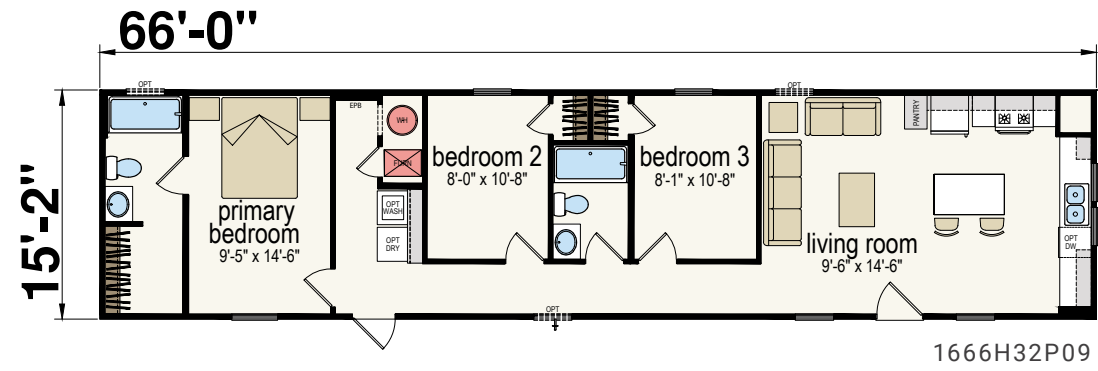
Three Bed | Two Bath | 1,092 Sq. Ft.



Pendleton

Only End Elevation Option for this Model is P1

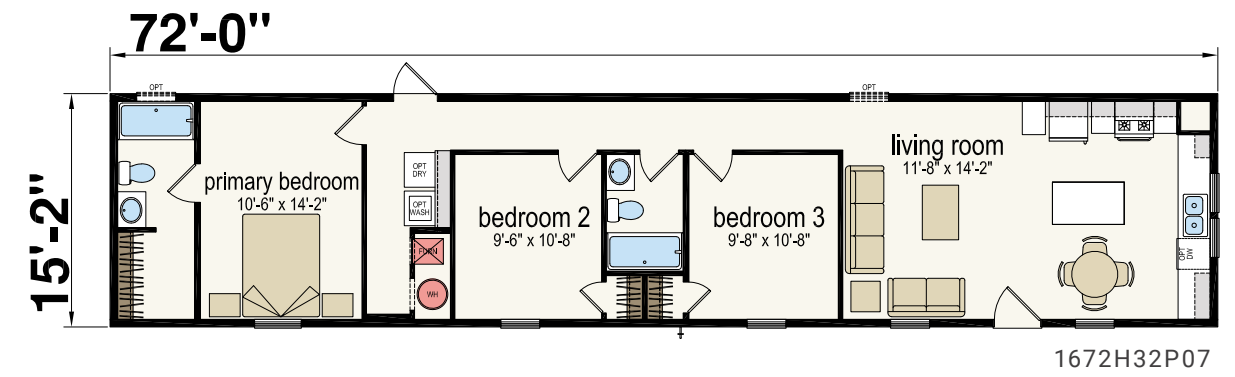
Three Bed | Two Bath | 1,000 Sq. Ft.



Ballard

Only End Elevation Option for this Model is P1

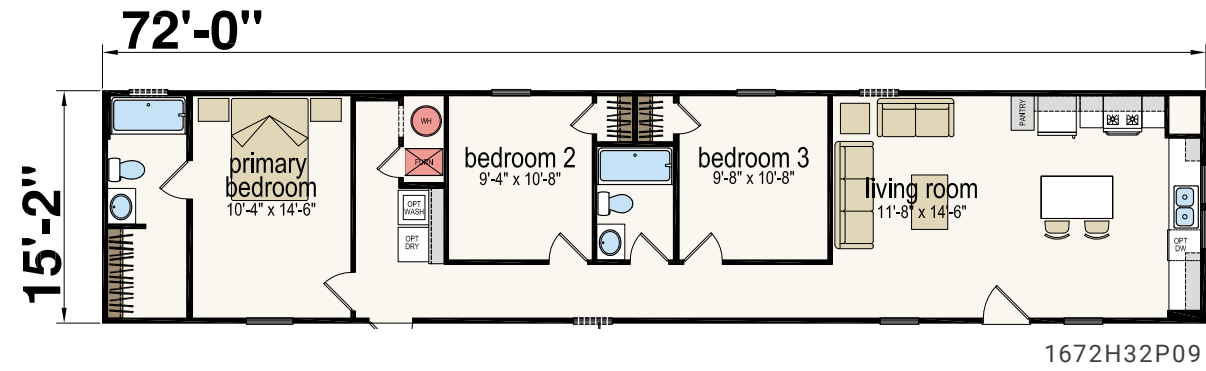
Three Bed | Two Bath | 1,092 Sq. Ft.



Powell

Only End Elevation Option for this Model is P1

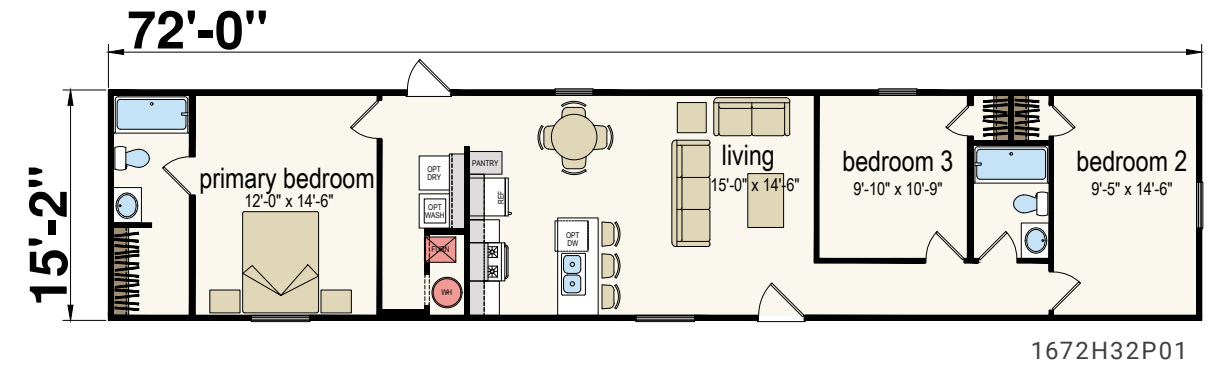
Three Bed | Two Bath | 1,092 Sq. Ft.



Bardstown

1672H32P02 - Bardstown Reverse Aisle

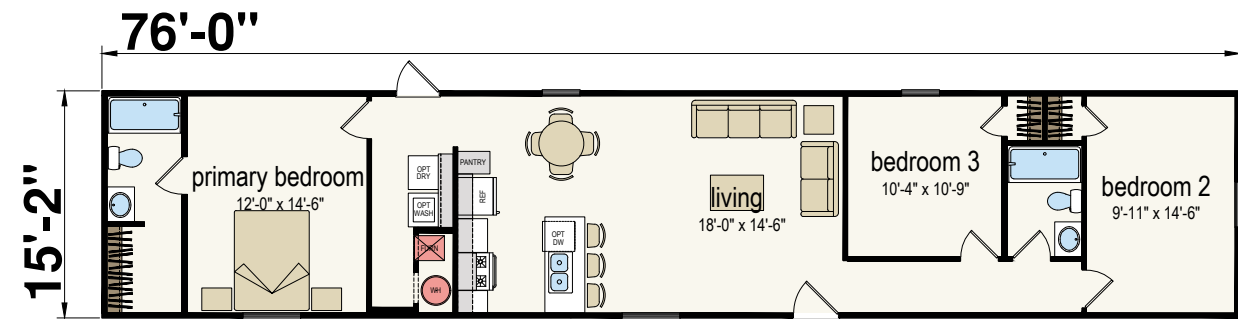
Three Bed | Two Bath | 1,092 Sq. Ft.



Ridge

1676H32P02 - Ridge Reverse Aisle

Three Bed | Two Bath | 1,152 Sq. Ft.

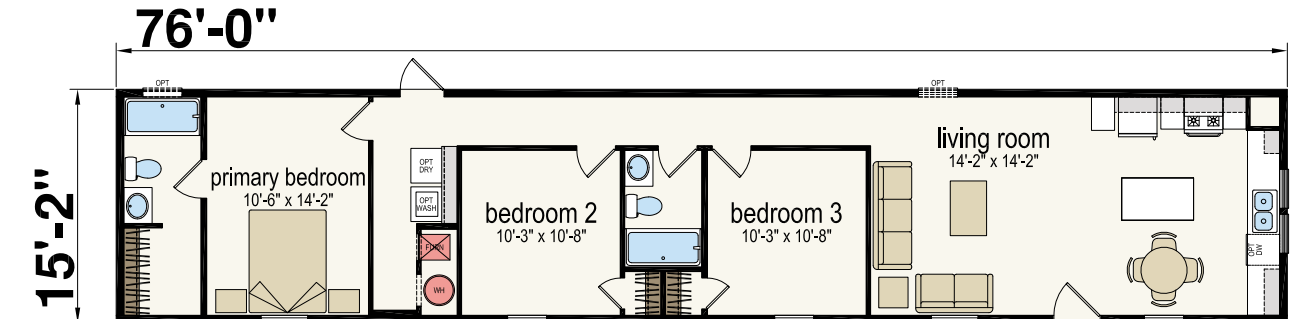


1676H32P01

Somerset

Only End Elevation Option for this Model is P1

Three Bed | Two Bath | 1,152 Sq. Ft.



1676H32P07

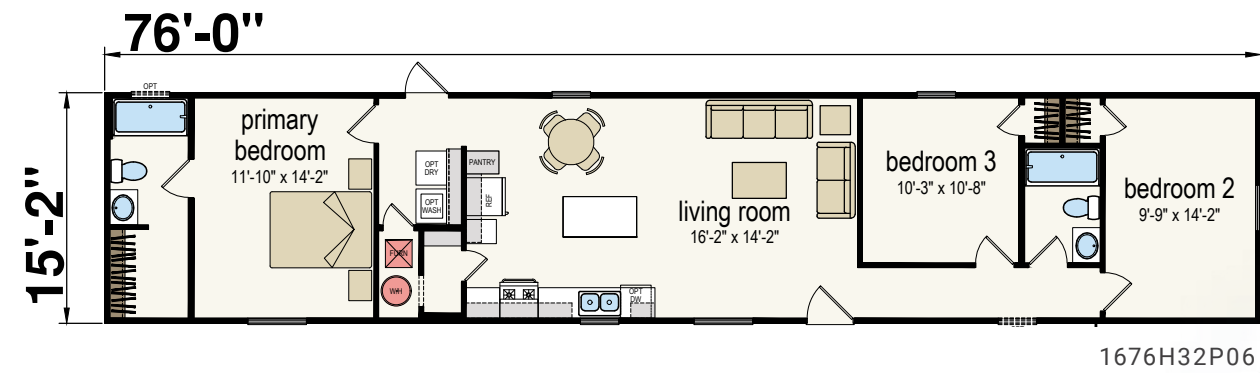


Virtual Tour!

Monte

1676H32P05- Monte Reverse Aisle

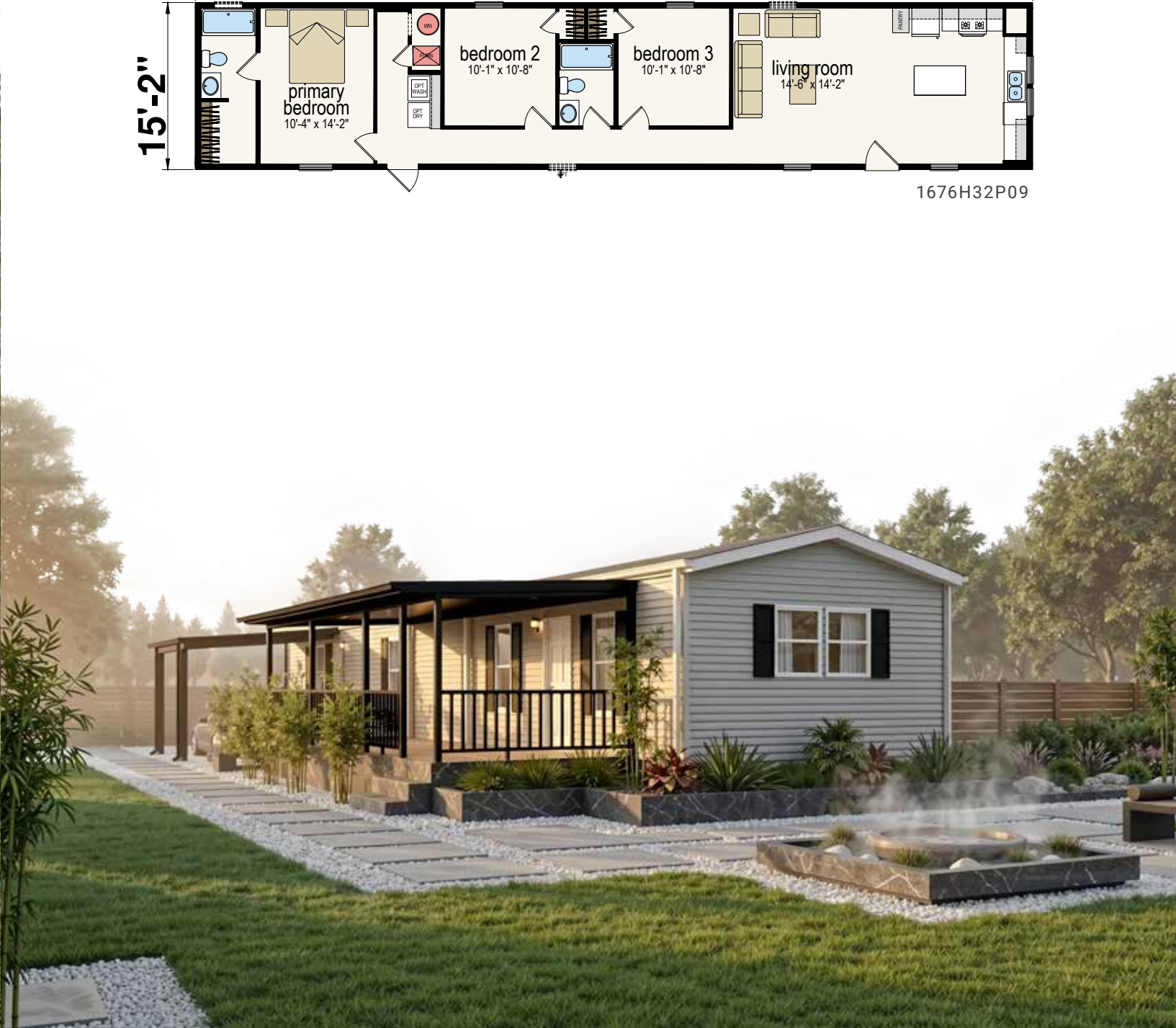
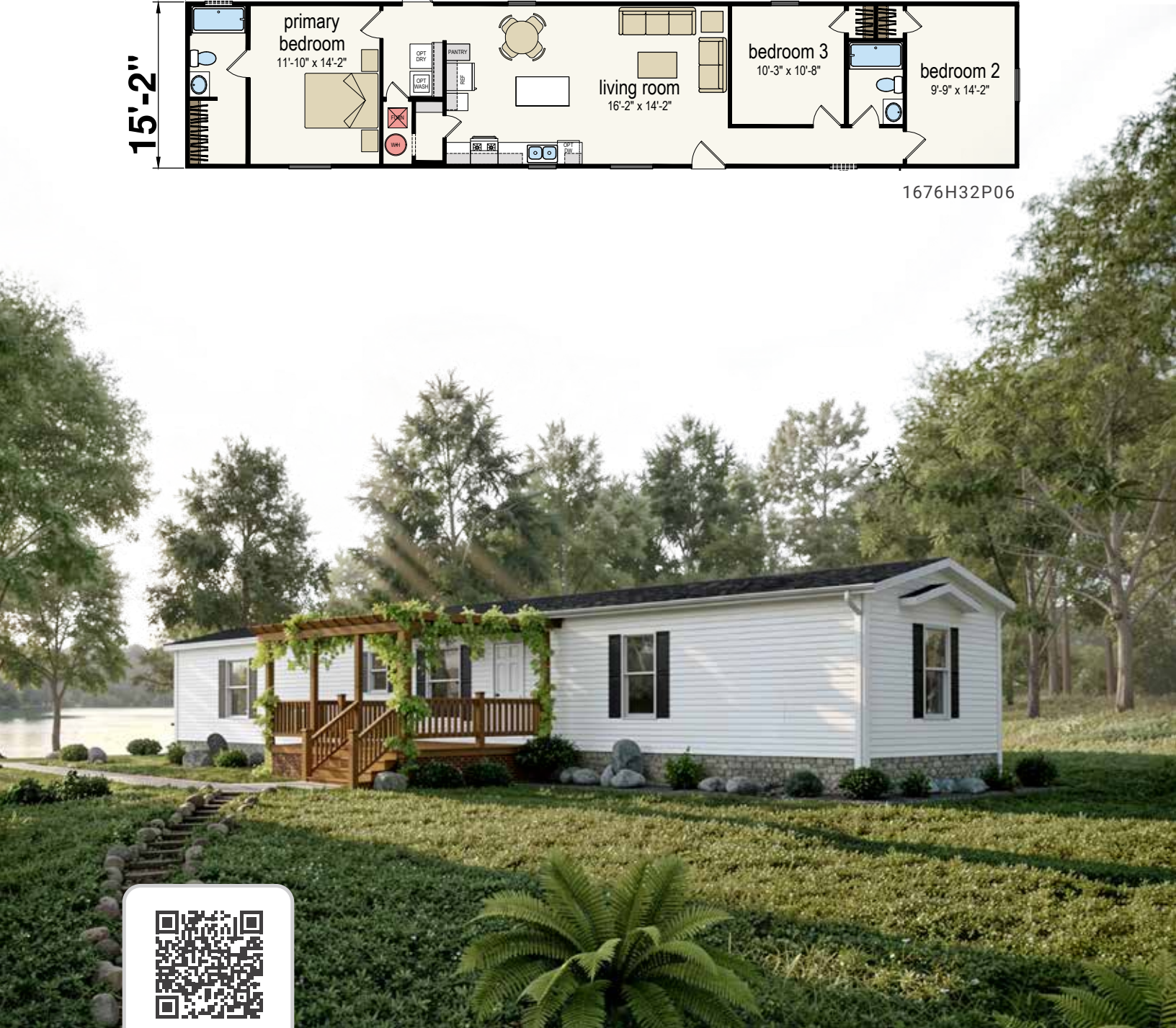
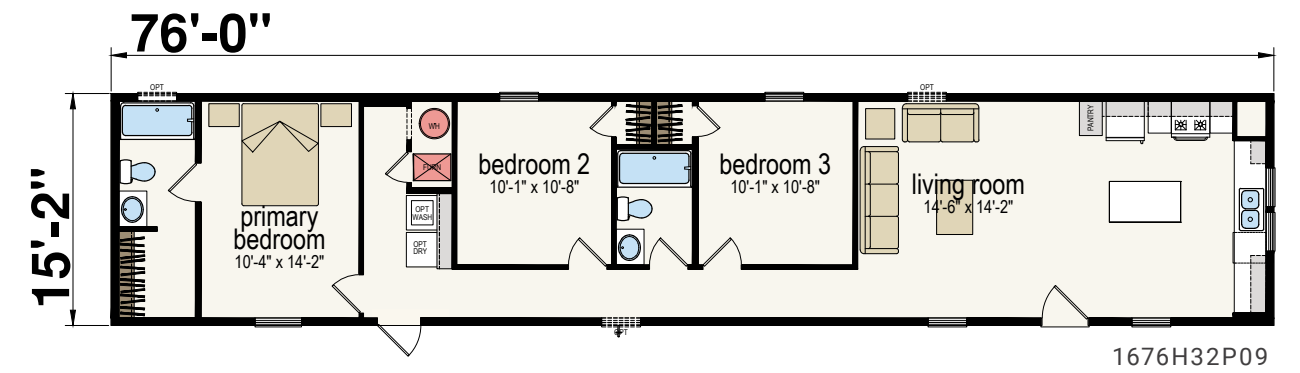
Three Bed | Two Bath | 1,152 Sq. Ft.



Floyd

Only End Elevation Option for this Model is P1

Three Bed | Two Bath | 1,152 Sq. Ft.

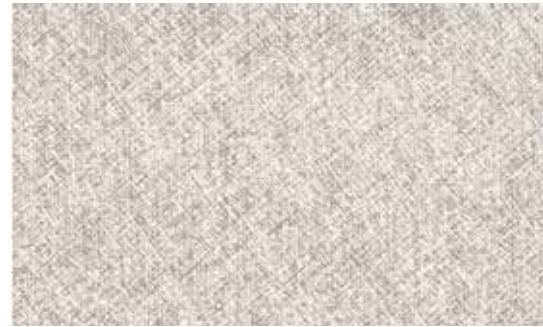


Virtual Tour!

Decor Options

INTERIOR

Walls



Sketch Prime

Cabinets



Chai Oak Shaker Door



Arctic White Shaker Door

Vinyl Flooring



AF020 Aged European Oak Natural

Countertops



White Carrara



Roca Bosco

EXTERIOR

Shutters



Clay Wine Blue White Black

Vinyl Siding



Cypress Flint Light Blue



Clay White

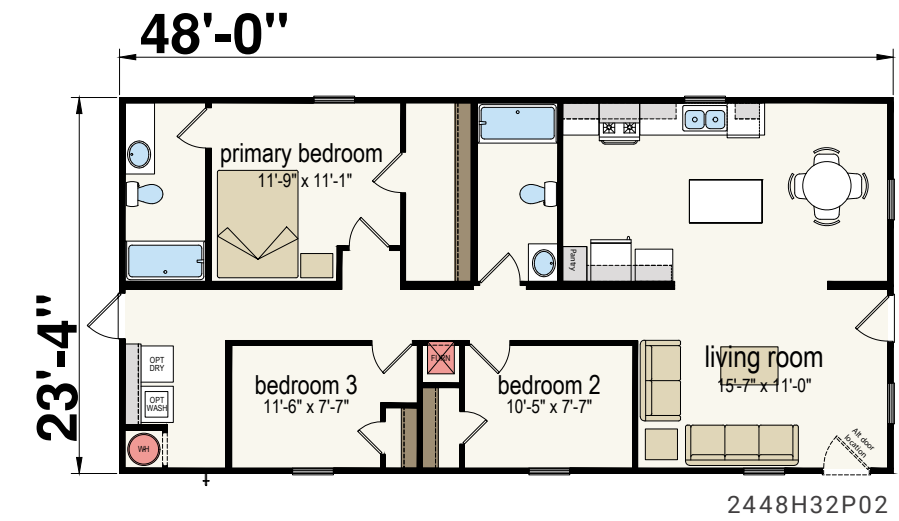
Shingles



Black

Plateau

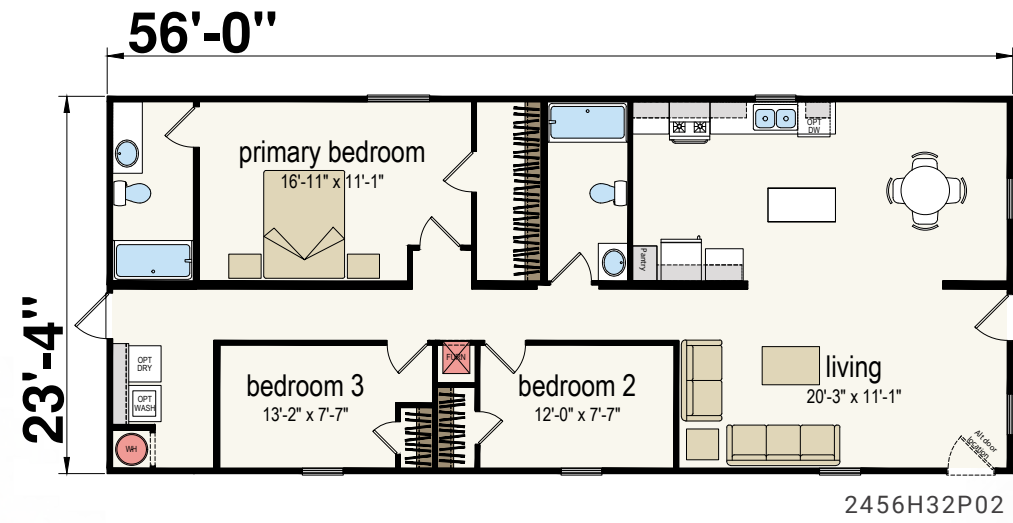
Three Bed | Two Bath | 1,120 Sq. Ft.



Virtual Tour!

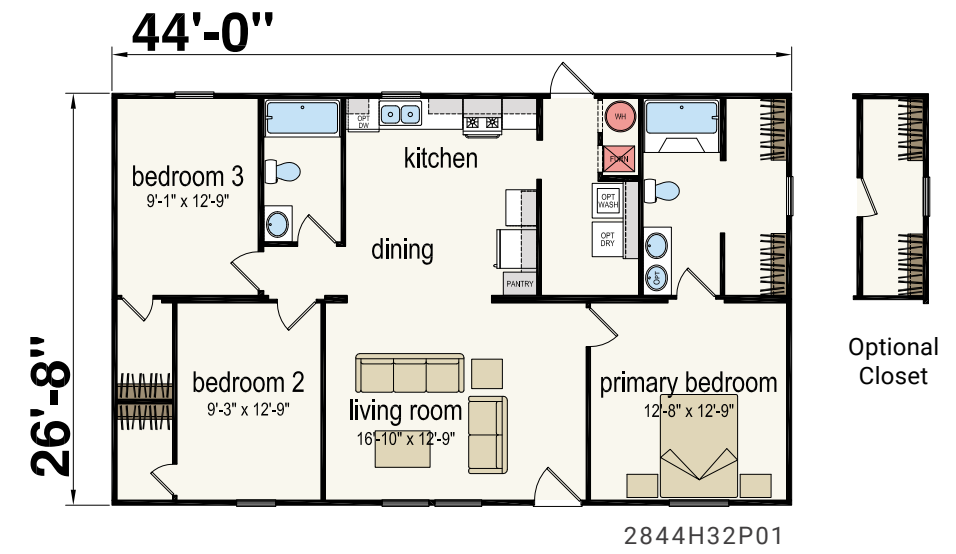
Horizon

Three Bed | Two Bath | 1,306 Sq. Ft.



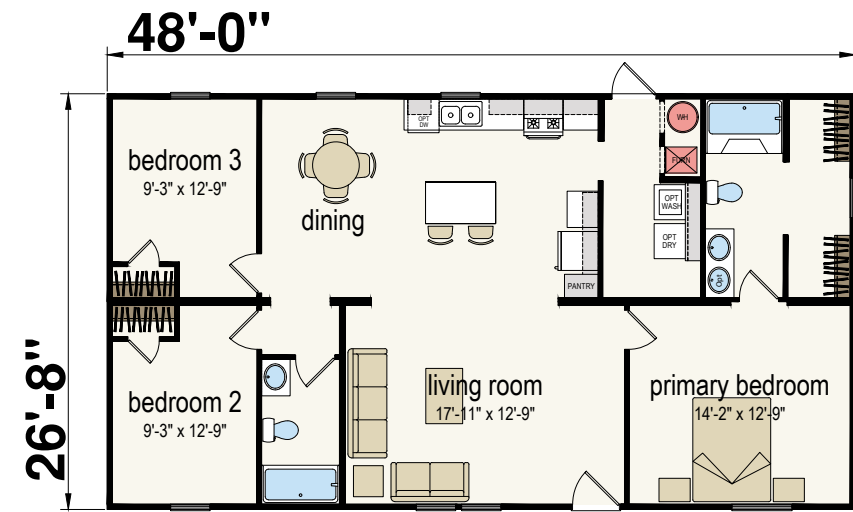
Estill

Three Bed | Two Bath | 1,173 Sq. Ft.



Churchill

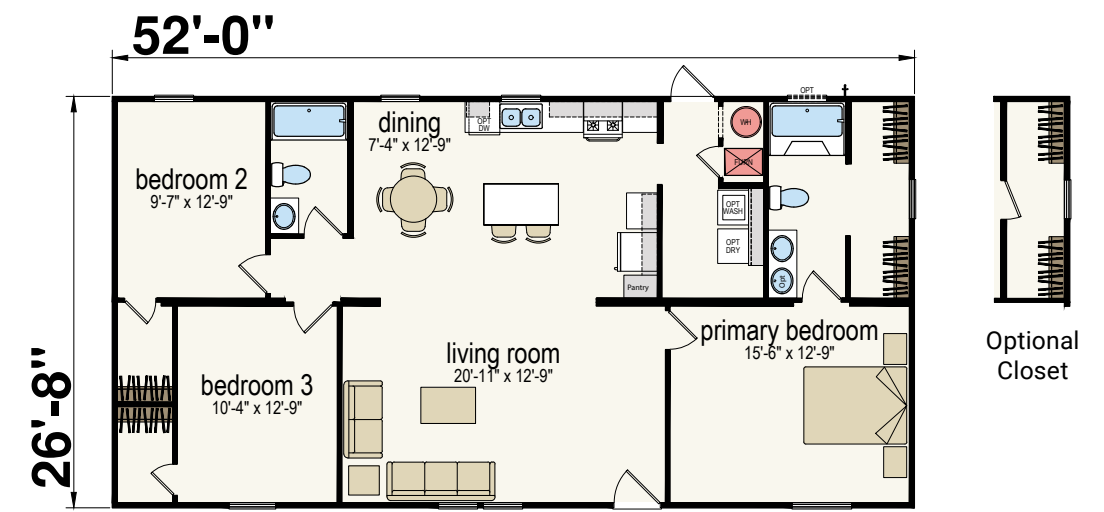
Three Bed | Two Bath | 1,280 Sq. Ft.



2848H32P06

Mercer

Three Bed | Two Bath | 1,387 Sq. Ft.

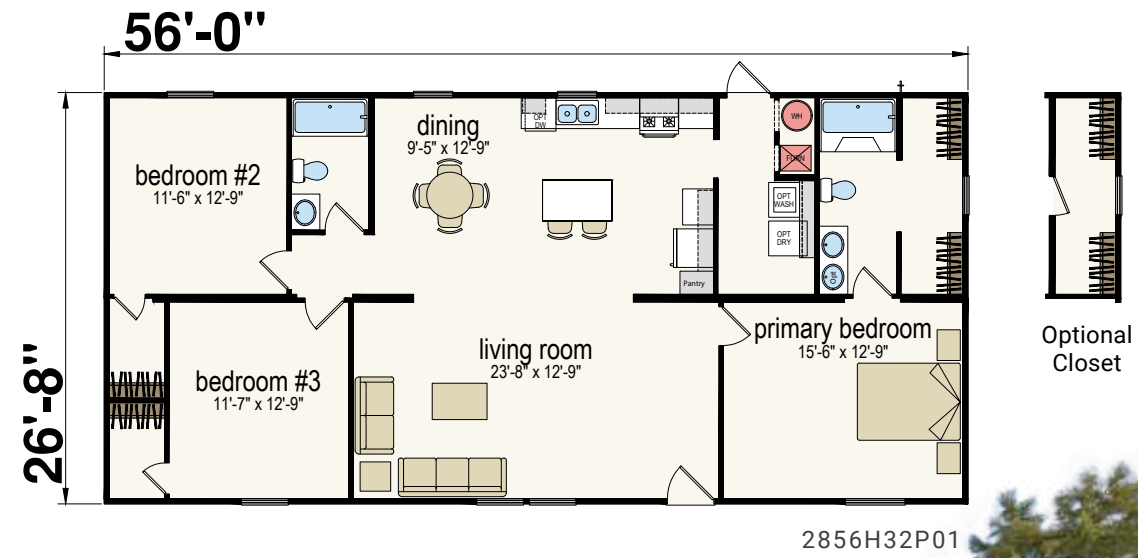


2852H32P01



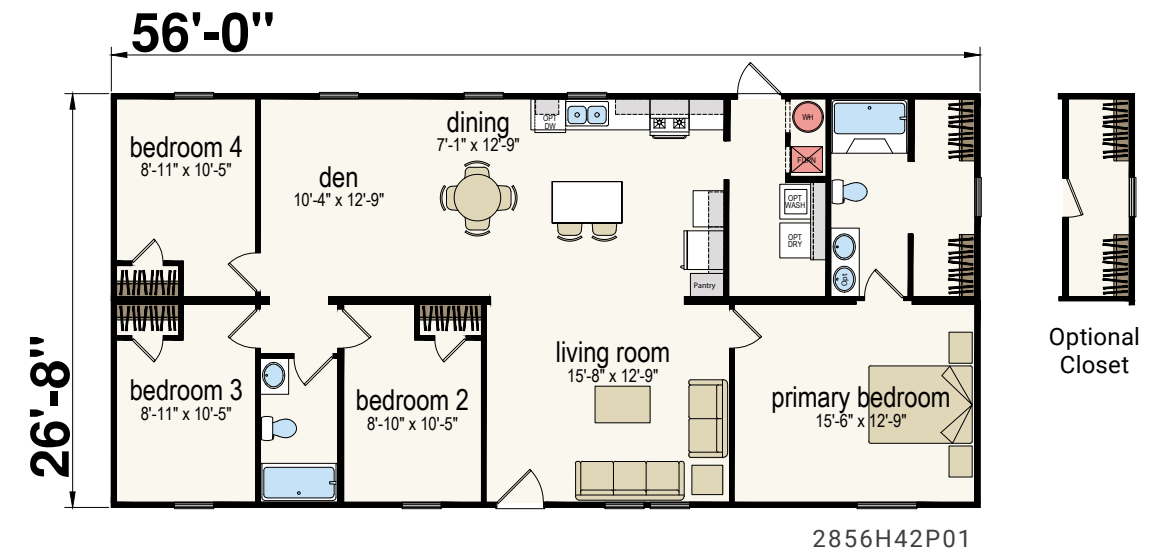
Apex

Three Bed | Two Bath | 1,493 Sq. Ft.



Crown

Four Bed | Two Bath | 1,493 Sq. Ft.



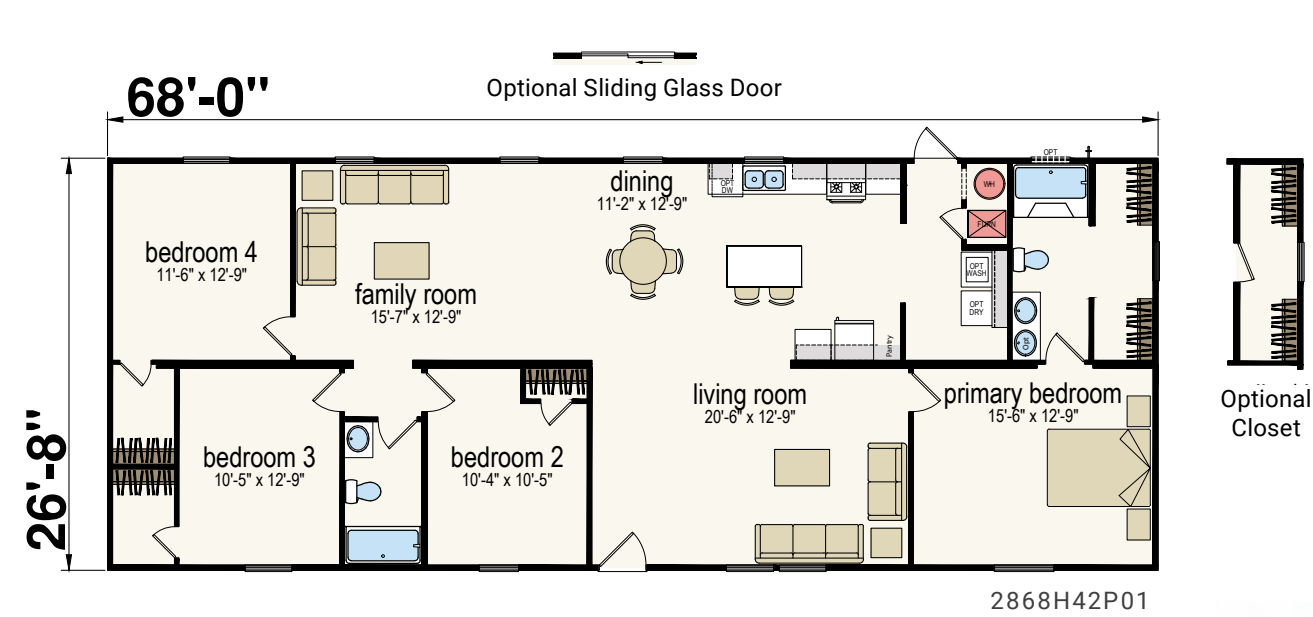
Virtual Tour!



Virtual Tour!

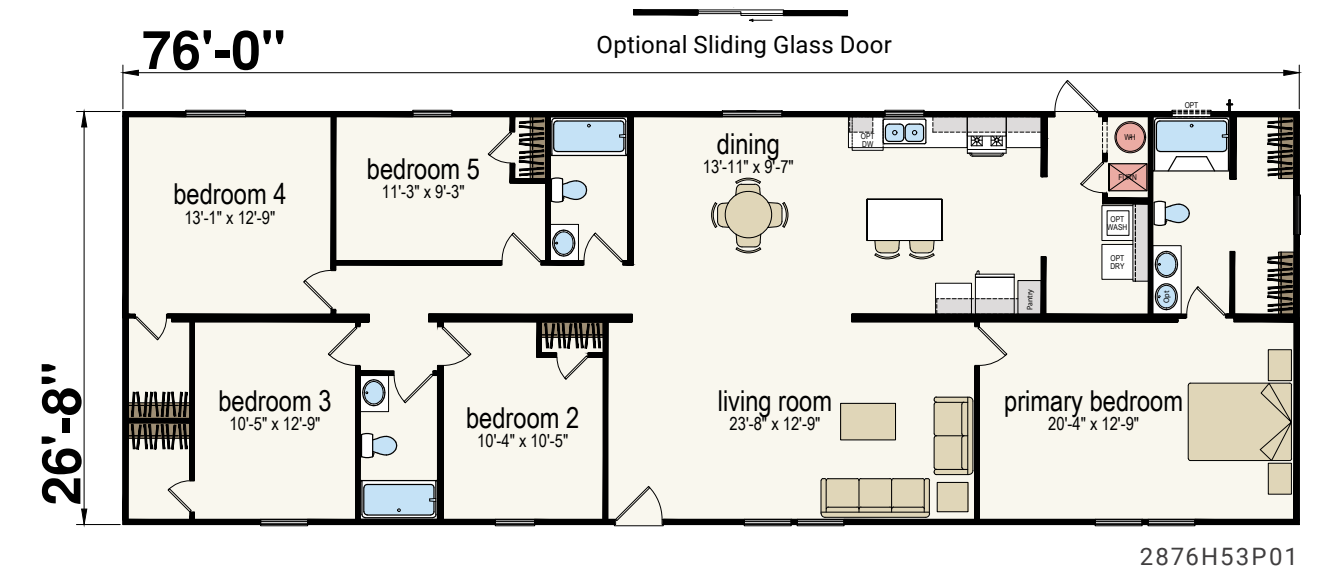
The Grand

Four Bed | Two Bath | 1,813 Sq. Ft.



Pinnacle

Five Bed | Three Bath | 2,027 Sq. Ft.

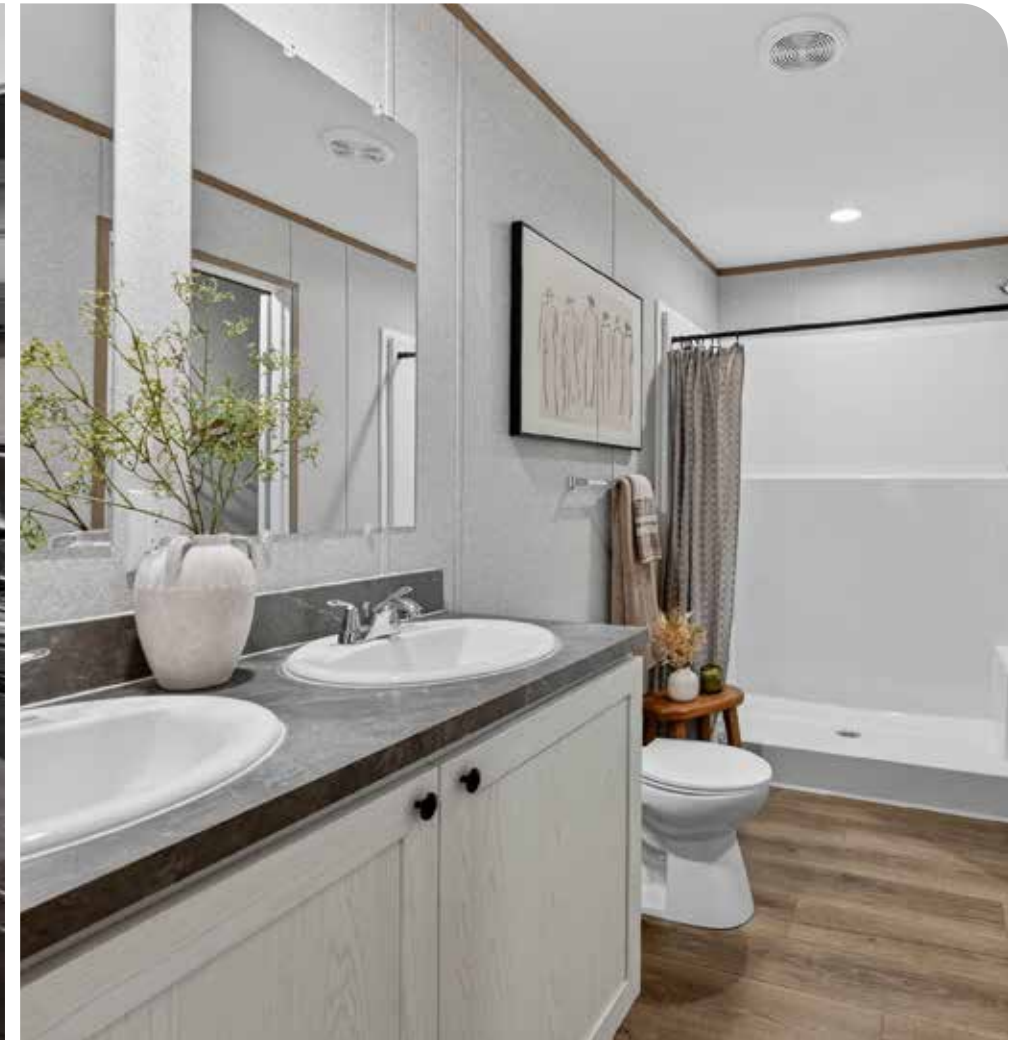


Virtual Tour!



Virtual Tour!

The Grand | Interior Photos



The Grand | Interior Photos



Standard Features

Construction

- Recessed Frame
- Detachable Hitch
- 48" O.C. Outriggers
- 2x6 Exterior Sidewalls - 16" O.C.
- 2x8 Floor Joist - 16" O.C. on 16' Wide
- 2x6 Floor Joist - 16" O.C. on 14' Wide
- R-19 Sidewall Insulation
- R-11 Floor Insulation
- R-28 Roof Insulation
- 7/16" OSB Roof Sheathing
- 30lb PSF Roof Load
- 19/32" OSB Floor Decking
- 8' Sidewall w/ Full Textured Ceiling

Exterior

- 3-Tab Shingles - Black
- Shutters at Door Side & Hitch End
- Vinyl Low-E Windows (No Grids)
- White Corner Posts
- 6-Panel Residential Front & Rear Door
- Ice Dam Protection

Interior

- 60" Fiberglass Shower in Primary Bath
- Fiberglass Tub/Shower in Second Bath
- Porcelain Lavs
- Metal Faucets Throughout
- 4" Laminate Backsplash Throughout
- Shaker MDF Cabinet w/ Full Overlay
- Main Panel VOG Throughout

- Factory Select Linoleum Throughout
- 7" Stainless Steel Sink
- Vanity Mirror in Both Baths
- Laminate Countertops
- 30" Lined Overhead Cabinets w/ Adjustable Center Shelf in Overhead
- Shelf Over Refrigerator
- Lined Cabinets - Overhead Only
- 3/4" MDF Stiles
- 4-Drawer Bank in Kitchen
- Round Cabinet Knobs
- 30" White 2-Panel Interior Doors
- Washer/Dryer Shelf

Plumbing / Heating

- Carrier Electric Furnace
- 30-Gallon Electric Water Heater
- Whole House Main Water Shut Off
- Exterior Faucet
- In-line Heat
- Furnace Door

Electrical

- 200 AMP Service
- 6" Can Lights Throughout
- Exterior Receptacle
- Exterior Lights at Both Doors

Appliances

- Electric Range - Black
- 18 Cu.Ft. Refrigerator - Black
- 30" Vertical Vent Range Hood



Due to continuous product development and improvement, prices, specifications, and materials are subject to change without notice or obligation. Square footage and other dimensions are approximate. Exterior images may be artist renderings and are not intended to be an accurate representation of the home. Renderings, photos and floor plans may be shown with optional features or third-party additions.



*Check out
floor plans
near you!*



CHAMPION[®]
HOMES

1418 S. 13th St. | Decatur, IN 46733